



FIZI[®]mite

A VERSATILE, TOXIN-FREE
INSECTICIDE / FUNGICIDE FOR ALL CROPS



HOW DOES FIZIMITE WORK?

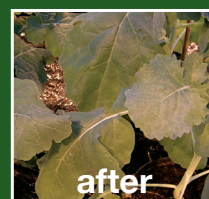
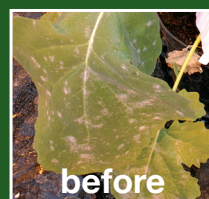
- Adult whitefly have been observed to stick to surfaces by the wings.
- Aphids, juvenile whitefly and spider mite are trapped by its wetness.
- Powdery Mildew spores are washed off leaves.

HOW AND WHERE TO USE FIZIMITE

- Can be used on all edible and ornamental crops.
 - Safe to use on a wide range of plants without phytotoxicity.
- Control relies on direct contact with the target.
 - Sufficient spray volume to cover all leaf surfaces, and good foliage penetration is essential.
- Routine use suppresses a wide range of pests.
- Combine with natural enemies to reduce pest hot-spots.
 - Parasitic wasps developing inside mummies appear unaffected.
 - Soil dwelling predatory mites do not appear to be affected.
 - Robust predators such as ladybirds, mirid bugs, hoverfly and lacewing larvae appear unaffected.
 - Leaf dwelling predatory mites are affected by multiple applications. Separate by time or space to integrate.
- No harvest interval and no residual action, use right up to harvest.
- Pests will not become resistant.
- Plant wash for a cleaner shiny appearance.
- Foliar nutrients for a healthier plant.
- Excellent shelf life.

POWDERY MILDEW – highly effective

Regular application can prevent powdery mildew from becoming established. To achieve control, apply to both upper and lower surfaces of the leaves.



WHITEFLY – controls adults and larvae

Adult Whiteflies get stuck to leaves and surfaces by their wings, although the plants do not become sticky. Larvae that are in direct contact will be controlled. Re-applications are recommended weekly or fortnightly to ensure that newly-hatched adults and larvae are controlled.



SPIDER MITE – controls active stages

If caught in the early stages, before webbing has become intense, then a thorough application to the upper and lower surfaces of leaves will control the problem. Re-applications at weekly intervals will be required to maintain control since Spider Mite eggs are not affected.



APHID – controls adults

Small and delicate aphid species can be controlled by 1-2 applications followed by weekly applications. More robust species such as the Peach Potato aphid (*Myzus persicae*) require 2-3 applications at 3 day intervals, followed by routine treatments.



MEALYBUG - controls adults and large nymphs

Two applications should be made on two consecutive days. An initial application removes the protective wax and a second application controls mealybugs. Eggs and small juveniles are more difficult to control, so further applications at weekly or fortnightly intervals are recommended.



SCALE – controls adults

Two applications should be made on two consecutive days. An initial application removes the protective wax and a second application controls scale. Eggs and small juveniles are more difficult to control, so further applications at weekly or fortnightly intervals are recommended.



PSYLLID e.g bay sucker, *Trioza alacris* – controls adults and nymphs

For an established population of Bay sucker, a thorough application should be made to the leaf curls to the point of run-off, followed by a similar application one or two days later. Continued regular use of Fizimite should protect plants from hatching eggs.



FIZImite



AVAILABLE IN 1 LITRE AND 5 LITRES
INGREDIENTS:

FIZImite contains a unique blend of safe, physically acting pest and disease control surfactants.

CONTROL:

FIZImite controls by physical means. It controls a wide range of pests including: whitefly, aphid, spider mite, mealybug, hard and soft scale insects and bay sucker psyllids. **CONTROLS POWDERY MILDEW.**

CROPS:

Protected and outdoor edible and ornamental crops.

APPLICATION METHOD: Foliar spray weekly or as necessary according to crop and situation. Ensure complete cover of top and bottom surfaces of foliage for best effect.

DILUTION RATE: 1 ml per litre water.

Contact Us:

Russell IPM Ltd., Unit 45, First Avenue, Deeside Industrial Park, Deeside, Flintshire, CH5 2NU
T: 01244 281 333, E: info@russellipm.com, www.russellipm.com