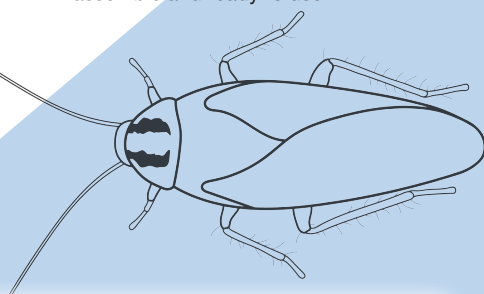


Lureking cockroach monitor lowline

Russell IPM's Lureking lowline trap is the larger of two highly effective, premium monitors for cockroaches. The traps are pre-baited, easy to assemble and ready to use.



Benefits

- Highly effective
- Safe, clean and easy to use.
- Insecticide free and non-toxic.
- Intergrated specially formulated attractant
- Made with high quality cardboard and pressure sensitive glue.
- Compact trap for placement in difficult to reach places.
- Slim and discreet, can be hidden behind or beneath equipment and furniture.
- Four entry points onto glue patch
- Angeled entry ramps can be assembled to facilitate upward crawling onto the sticky surface.

Target insects



German cockroach
Blattella germanica



Oriental cockroach
Blattella orientalis



American cockroach
Periplaneta americana



Australian cockroach
Periplaneta australasiae

Where to use

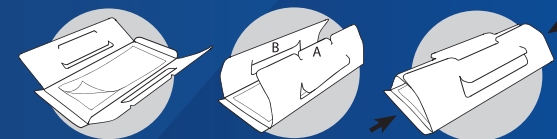
Homes, offices, warehouses, restaurants, grocery stores, hospitals, nursing homes, schools, hotels and cruise ships, food storage and processing facilities.



Application method

Assembly

Peel off the protective paper from the sticky base. Form the trap shape by inserting slot A into slot B. Fold the tabs on the base inwards to create a slope for the cockroaches to climb up. As the trap is pre-baited it is ready to use.



Where to place/distance

Place the trap where infestation is suspected, ensuring it is in a convenient place to check regularly. Dispose of the trap when the sticky base is covered

Replacement

Replace every 6-8 weeks unless the trap is full earlier.

Storage

Store in a cool, dry place in their packaging for a shelf life of 24 months.

Product code

CAT-NO30-255

Lureking NO30

Box of 100