

Technical Data Sheet

Product: Xlure MST

Code: CAT-XLURE-MST-KIT

Product Function: Monitoring pest populations.



Description: The Xlure MST is a multi-species trap for the most common crawling insects found in facilities along the food chain. Designed to reduce the cost of monitoring a wide spectrum of species by containing multiple pheromones and attractants in one trap.

Active Ingredients: Range of pheromones and food attractants.

Packaging: 5 reusable traps plus 5 cartridges per box.

Longevity: 6 - 8 weeks

Trap Application:

Remove aluminium foil from cartridge. Secure into place under the main body of the trap. Place the trap on the floor in a potential/suspected area of infestation.

When to Use:

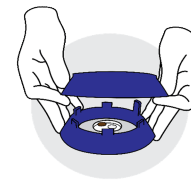
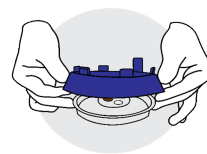
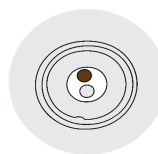
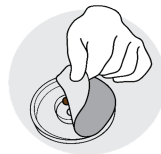
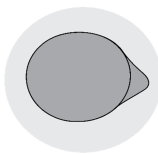
This trap can be used for monitoring purposes before the pest becomes a problem or used to combat pest populations.

Trap Density:

Place 1 trap in each room of suspected infestation in close proximity to the food commodity that is likely to harbour the pest. To reduce the risk of pests moving between rooms, place 1 trap near exits. For larger areas, traps can be placed 8 - 10m apart.

Replacement:

Replace the cartridge every 6 - 8 weeks or as recommended by professional pest controller. Remove used cartridges and dispose of away from the monitoring area so as not to interfere with trap activity.



Storage

Store in a cool, dry place out of direct sunlight.

Precautions

- Do not eat or drink while handling this product.
- Wear gloves when handling any pheromone lures.

Russell IPM Ltd,
 Unit 45, First avenue,
 Deeside Ind. Park,
 Deeside, CH5 2NU



Tel: +44 (0) 1244 281 333
 Fax: +44 (0) 1244 281 878
 Mail: info@russellipm.com
www.russellipm.com