

## Xlure MST

### Kit and refills

The Xlure MST (Multi Species Trap) is a best selling multi-species trap for the most common crawling insects found in facilities along the food chain. Designed to reduce the cost of monitoring a wide spectrum of species by containing multiple pheromones and attractants in one trap.

### Benefits

- Sturdy plastic shell with replaceable ready to use cartridge
- Combines multiple pheromones and attractants for monitoring the main crawling stored product insects
- Insecticide free and non-toxic
- 360° access for insects.
- Designed to provide an attractive sheltered environment to target insects
- Trap top completely covers the slotted base, preventing dust and debris accumulation
- Angled body on the trap facilitates the upward movement of insects. Rough texture around trap base aids pest grip
- Slick Teflon interior oiled with attractant that makes insect escape impossible
- Durable, compact trap that is easy to install, with a spill-proof replaceable cartridge
- Tether system available to secure traps in place, preventing unwanted removal/displacement

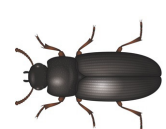
### Target insects



**Biscuit beetle**  
*Stegobium paniceum*



**Cigarette beetle**  
*Lasioderma serricorne*



**Rust-red flour beetle**  
*Tribolium castaneum*



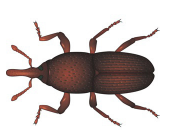
**Merchant grain beetle**  
*Oryzaephilus mercator*



**Saw toothed grain beetle**  
*Oryzaephilus surinamensis*



**Flat grain beetle**  
*Cryptolestes pusillus*



**Grain weevil**  
*Sitophilus granarius*



**Rice weevil**  
*Sitophilus oryzae*



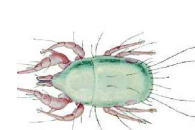
**Confused flour beetle**  
*Tribolium confusum*



**Khapra beetle**  
*Trogoderma granarium*



**Warehouse beetle**  
*Trogoderma variabile*



**Flour mite**  
*Acarus siro*

### Where to use

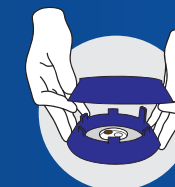
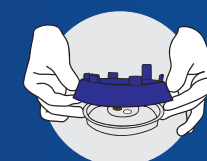
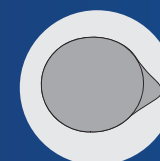
Food processing plants, manufacturing plants, food storage facilities, mills, bakeries, retail food and pet food stores, homes and kitchens.



### Application method

#### Assembly

Peel the foil lid from the refill. Click the refill into the base of the trap from underneath. Line up the trap so the tether system on the base fits through the hole in the plastic lid and click together.



#### Where to place/distance

The Xlure MST should be placed on a flat surface. In small rooms one trap will be sufficient. In larger open areas e.g. factories, kitchens or storage facilities, traps should be placed approximately 8-10 metres apart in a grid formation. More traps may be required in buildings with more than one level, where there are obstacles or if there are heavy infestations.

#### Replacement

Replace the refill every 6-8 weeks unless the trap is full earlier.

### Storage

The refills should be stored sealed, in a cool dry place for a shelf life of 12 months. If longer storage is required store in a fridge or freezer.

### Product code

CAT-XLURE-MST-KIT	Xlure MST kit	Box of 5 traps and 5 refills
CAT-XLURE-MST-REFILL	Xlure MST refills	Box of 10 refills
CAT-TET-01	Tether System for Xlure MST/FIT/HHB/RWT	Box of 10