



# Soft Fruit Protection







**Russell IPM Ltd.** is dedicated to the development of innovative and dynamic integrated pest management solutions compatible with biological control agents. This provides growers with safe and sustainable tools for the monitoring, prevention, and suppression of pests.

**Russell IPM's** products allow for informed, and well-timed decision-making, in order to improve pest management, reduce the need for pesticide intervention, and reduce the incidence of pesticide residues at harvest. In addition, these solutions promote healthy crop management leading to improved quality and increased yields, while minimising effects on the environment.

**Russell IPM Ltd.** is based in North Wales in the UK. We are a market leader in providing customer focused solutions to issues facing farmers and growers across the Agriculture, Horticulture and Stored Product sectors. Over the last 30 years Russell IPM has become a leading UK manufacturer of pheromone-based insect monitoring and control systems. We are an international company with marketing subsidiaries in Spain, Morocco, Algeria, Jordan, China, Kenya, USA, Mexico, Bangladesh, Jordan, Qingdao and Europe with over 40 distributors worldwide.

## Awards and recognitions

Queen's award for Enterprise: International trade 2011

Queen's award for Enterprise: Innovation 2012

Queen's award for Enterprise: Innovation 2018





**Russell IPM Ltd.** specialises in the development and manufacturing of pest management solutions for use in agriculture, stored products and horticulture. We can be found at [www.russellipm.com](http://www.russellipm.com)



**Russell Bio Solutions Ltd.** is a leading manufacturer of biological fermentation and formulation products. We are globally recognised for our effective Biostimulants, Biofertilizers, and Biopesticides, paving the way to safe, sustainable agriculture. We can be found at [www.russellbio.net](http://www.russellbio.net)



**Russell IOT Ltd.** is dedicated to the development and manufacture of smart solutions to monitor pests within agriculture and the public sector. We can be found at [www.russell-iot.com](http://www.russell-iot.com)



**IPM Direct Ltd.** is an eCommerce business with a wide range of integrated pest management tools sending high quality products to UK homeowners and gardeners. We can be found at [www.plantpro.uk](http://www.plantpro.uk)



Certificate Number 8428  
ISO 9001

**Russell IPM Ltd.** is certified by ISO 9001 for achieving numerous quality management principles including a strong customer focus, motivation, and implication of top management, and for having continual improvement.



Ecocert F32600

**Russell Bio Solutions Ltd.** Ecocert Products are suitable for use in Organic Farming in accordance with [as appropriate: Regulations (EU) No 2018/848 and 2021/1165 and/or the NOP Regulation and/or the JAS Regulation].



**Russell IPM Ltd.** and **Russell Bio Ltd.** Is certified by OF&G, a respected UK certification body for organic farming and food production. They ensure compliance with organic standards ensuring product integrity and access to premium markets.





# Table of **content**

TruePest .....	5
Solution 1: Thrips – Push-Pull Strategy, Solution 2: TruePest .....	6
Solution 3: SWD, Solution 4: Recharge and Yokosan .....	6
Optiroll Yellow Range .....	7
Optiroll Blue Range .....	8
Optiroll White Range .....	9
Lybolt, Lygus Pheromone Lure .....	10
MagiPal, Thripnok .....	11
SWD Dry Lure, MaxDro .....	12
Red Impact Board, Red Optiroll .....	13
Impact Boards .....	14
Hytak Boards .....	15
Probandz .....	16
Pheromone Lures .....	17
Delta Trap, Wasp & FlyCatcher with the Wasp & Fly Lure .....	18
Suzukii Trap .....	19
MothCatcher Trap, Mini MothCatcher Trap .....	20
Green Vane Trap, Raspberry Beetle Trap .....	21
Recharge, Yokosan .....	22
Converta Bio NPK, Fizimite .....	23



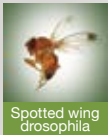
# TruePEST

Intelligent Insect Detection System

## What is it?

Powered by advanced artificial intelligence techniques, **TruePest** is a smart mobile application suit for highly efficient monitoring of insect pests. **TruePest** allows you or any of your team members to identify, count and record target insects on sticky traps, with a mobile phone device.

## Target pests



## Key advantages

- **TruePest** provides an accurate count of the target insects on sticky traps to aid in decision making and the timing of interventions within IPM strategies
- No Wi-Fi necessary
- Any data acquired by **TruePest** is stored in a secure database following GDPR guidelines
- Available on Android and IOS
- Can also be managed on a web portal

## What to expect

- Real time, rapid and accurate counts of specified insects
- The identification of key hotspots/locations where pests reside and enter the crop
- User friendly





## Solution 1 **Thrips – Push-Pull Strategies**

A robust thrips management system combining the **Blue Optiroll Super Plus** rolls (p.8), and **Magipal** (p.11). Trial results demonstrated a reduction of 95% in thrips numbers by combining the Push-Pull system to catch adult thrips, with predatory mites that feed on thrips larvae.

## Solution 2 **TruePest**

**TruePest** is successfully breaking barriers in crop management allowing anyone to monitor, identify and count crop pests on sticky traps, IN REAL TIME with their smart phone device. Simply download the app, ask for an account, and order your species-specific traps and lures (p.5).



## Solution 3 **Spotted wing drosophila**

**Suzukii Trap + MaxDro + SWD Dry Lure** – For full impact, combine the Suzukii Trap with these lures for precision monitoring of spotted wing drosophila. MaxDro and SWD Dry Lure (p.12) and Suzukii Trap (p.19).

**Red Optiroll** - A simple targeted approach to mass monitoring spotted wing drosophila (p.13).

**Red Impact Trap + SWD Dry lure** – This simple, peel and hang combination makes monitoring of spotted wing drosophila quick and easy, eliminating the need to sift through liquid lures. SWD Dry lure (p.12) and Red Impact Trap (p.13).

**Probandz** – This effective adjuvant can reduce insecticide use against SWD by 96% and reduce grower costs by an estimated 50% (p.16).

## Solution 4 **Recharge and Yokosan**

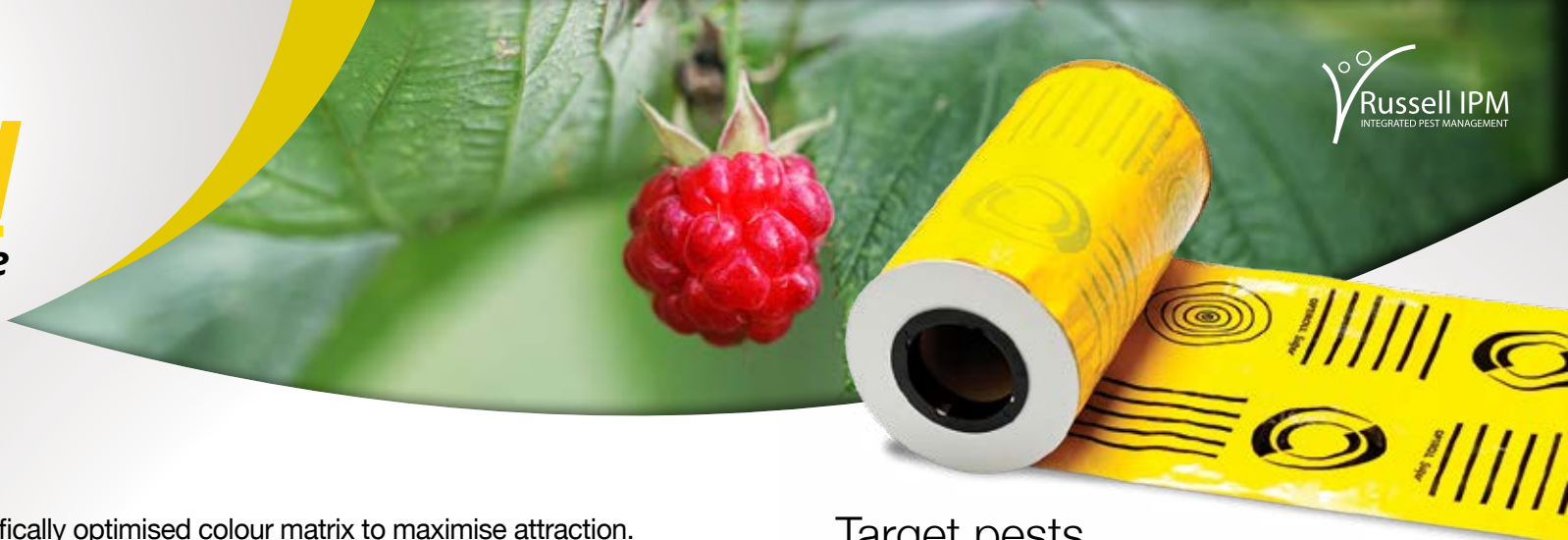
**Recharge and Yokosan** - Combine the use of Recharge and Yokosan together as part of a compatible and targeted biofertilisation solution. Significantly boost plant/crop growth and increase the plants ability to protect against biotic and abiotic stressors by triggering the plants natural defences. Recharge (p.22) and Yokosan (p.22).





# Optiroll

Yellow Range



## What is it?

**Optiroll Yellow** is designed with a scientifically optimised colour matrix to maximise attraction.

**Optiroll Super Yellow** has additional black patterns to increase the attraction and trap catch of a range of Dipteran species (flies).

**Optiroll Super Plus Yellow** is encapsulated with the western flower thrips, *Frankliniella occidentalis*, aggregation pheromone to boost thrips trap catch.

## Key advantages

- The rolls are manufactured with UV resistance
- Works well throughout different seasons
- High tack adhesive layer

## Target pests



Whitefly

Aphids


Thrips

## What to expect

- Early detection of pest invasions
- Mass monitoring of pests
- Reduces adult whiteflies by up to 85%, when compared with crops without the use of rolls



## Optiroll Yellow range size selection:

<b>Optiroll</b> Yellow	<b>Optiroll</b> Super Yellow	<b>Optiroll</b> Super Plus Yellow	
PCT-OPTIBU8-Y10 (10cm x 100m)	PCT-OPTIBU8-SY15 (15cm x 100m)	PCT-OPTIBU8-SPTY15 (15cm x 100m)	
PCT-OPTIBU8-Y15 (15cm x 100m)			
PCT-OPTIBU8-Y30 (30cm x 100m)	PCT-OPTIBU8-SY30 (30cm x 100m)	PCT-OPTIBU8-SPTY30 (30cm x 100m)	

# Optiroll

Blue Range

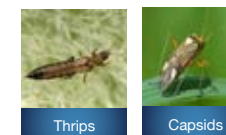
## What is it?

**Optiroll Blue** is designed with a scientifically optimised colour matrix to maximise thrips attraction.

**Optiroll Super Blue** has additional white patterns that increase thrips attraction and catch rate by approximately 30 - 100%.

**Optiroll Super Plus Blue** has the western flower thrips, *Frankliniella occidentalis*, aggregation pheromone incorporated into the glue layer of the trap to boost thrips trap catch.

## Target pests



Thrips

Capsids

## Key advantages


- The rolls are manufactured with UV resistance
- Works well throughout different seasons
- High tack adhesive layer

## What to expect

- Mass monitoring of pests
- Over 50% reduction of thrips populations
- Compatible with bumble bee pollination and thrips biocontrol



## Optiroll Blue range size selection:

<b>Optiroll</b> Blue	<b>Optiroll</b> Super Blue	<b>Optiroll</b> Super Plus Blue	
PCT-OPTIBU8-B10 (10cm x 100m)	PCT-OPTIBU8-SB15 (15cm x 100m)	PCT-OPTIBU8-SPTB15 (15cm x 100m)	
PCT-OPTIBU8-B15 (15cm x 100m)			
PCT-OPTIBU8-B30 (30cm x 100m)	PCT-OPTIBU8-SB30 (30cm x 100m)	PCT-OPTIBU8-SPTB30 (30cm x 100m)	



## What is it?

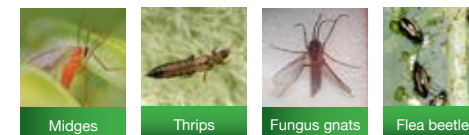
Our full Optiroll range is also available in white. The **Optiroll Super White Plus** rolls are encapsulated with the midge pheromone of your choosing. These pheromones include the blueberry gall midge, (*Dasineura oxycoccana*), blackberry midge, (*Dasineura plicatrix*) and the raspberry cane midge, (*Resseliella theobaldi*). The addition of a blue pattern on the white roller traps increases the rolls attraction to thrips.

## Key advantages

- Mass monitoring and trapping of pests
- Works well throughout different seasons
- The rolls are manufactured with UV resistance
- High tack adhesive layer



## Target pests



## What to expect

- High efficacy
- Cost effective
- Mass monitoring
- A reduction in chemical use
- Non-toxic
- Precise effective monitoring

## Optiroll White range size selection:

<b>Optiroll</b> White	<b>Optiroll</b> Super White	<b>Optiroll</b> Super Plus White
PCT-OPTIBU-W10 (10cm x 100m)	PCT-OPTIBU8-SW15 (15cm x 100m)	PCT-OPTIBU8-SPTW15 (15cm x 100m)
PCT-OPTIBU-W15 (15cm x 100m)	PCT-OPTIBU8-SW30 (30cm x 100m)	PCT-OPTIBU8-SPTW30 (30cm x 100m)
PCT-OPTIBU-W30 (30cm x 100m)		




**Optiroll**  
White Range

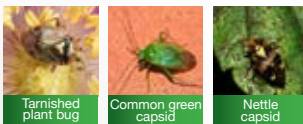


# Lybolty

## What is it?

Lybolty is part of a push-pull system that deters capsids from entering and feeding on the crop, while pushing the pests toward traps. Lygus Push-Pull was developed in collaboration with NIAB East Malling, the Natural Resources Institute and AHDB.

## Target pests



## Key advantages

- Pesticide-free and effective method of managing capsid pests in strawberry and cane fruit as part of an integrated programme
- Compatible with biological and chemical control methods

## What to expect

- Early detection of Lygus pests
- Delays the build-up of Lygus pests
- Reduction in fruit damage by 15-85% (conventional vs organic)
- Dispensers last for 8-10 weeks temperature dependant

# Lygus Pheromone Lure

## What is it?

The *Lygus* pheromone lure attracts both the European tarnished plant bug, *Lygus rugulipennis* and the common green capsid, *Lygocoris pabulinus*. For *L. pabulinus* pair with the Blue Impact Board (p.14), and for *L. rugulipennis* pair with the Green Vane Traps (p.21).

## Target pests



## Key advantages

- Top quality manufactured semiochemicals
- Safe and easy-to-use
- Easy-to-store

## What to expect

- Precision monitoring



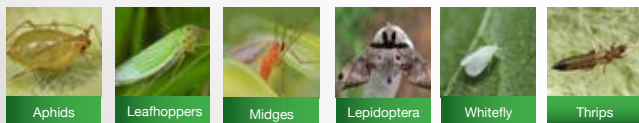


# MagiPal

## What is it?

MagiPal is a specially formulated attractant, which attracts naturally occurring and released predators and parasitoids into an area. These important natural enemies contribute to the management of the target pests, typically reducing pest numbers by 40-80% in field trials.

## Target pests



## Key advantages

- Attracts predators into the crop before pest numbers reach damaging levels
- Ensures a more even spread of natural enemies throughout the crop
- Delays the build-up of pest hot-spots
- Pesticide-free

## What to expect

- Increases pest catch rate when used as part of a push-pull strategy
- Lasts 2-3 months (temperature dependent)
- Combine with hoverfly releases to boost aphid control



# Thripnok

## What is it?

Thripnok is a lure that comes with a blend of two floral scents that attract a wide range of flower-inhabiting thrips species. Thripnok can be added to blue or yellow traps to increase the thrips trap catch by 3 to 6X.

## Target pests



Thrips species including western flower thrips and other flower-inhabiting thrips species.



## Key advantages

- Mass monitoring of thrips
- Improves the performance of insecticide and biological treatments
- Helps delay the spread of virus diseases vectored by thrips
- Versatile and reliable
- Higher efficacy with Russell IPM Impact or Hytak Boards
- Low maintenance

## What to expect

- Early detection of thrips
- Increased trap catch
- Enhanced efficacy of biological and chemical interventions



# SWD DRY LURE

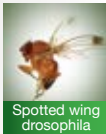
## MaxDro



### What is it?

The SWD Dry Lure and MaxDro (liquid lure) are highly attractive lures for monitoring of SWD. SWD Dry Lure is a versatile attractant that can be paired with the Red Impact Trap or hung inside the Suzukii Trap. MaxDro is a liquid attractant for the mass monitoring of SWD. It can be paired with the Suzukii Trap and SWD Dry Lure to maximise trap catch.

### Target pests



### Key advantages

#### SWD Dry Lure

- Can be used with a variety of SWD traps in all seasons
- Can be used alone or with liquid lures or with soapy water
- Can be moved from saturated traps to fresh traps
- Long lasting, up to 3 months at 24°C

#### MaxDro

- Effective mass monitoring in all seasons
- Maximises trap catch when used with the SWD Dry Lure

### What to expect

- Flexible year-round monitoring solutions
- Early detection of pest invasions
- Reduced catch of non-target species



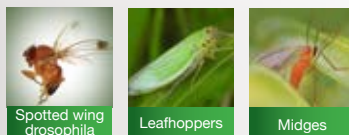


## Red Impact Board

### What is it?

Red Impact Board is a ready-to-use solution for spotted wing drosophila, *Drosophila suzukii* (SWD) monitoring. It comes with UV-light stable adhesive for easy capture of SWD. Use Red Impact Boards with Russell IPM's long-lasting SWD Dry Lures to monitor SWD.

### Target Pests



### Key Advantages

- Highly attractive red colour for SWD
- Grid pattern for quick assessment of pests
- Easy to install
- Detects early pest invasion

### What to Expect

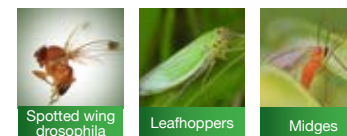
- Quick and effective monitoring process when paired with the SWD Dry Lure
- Board-size customisation flexibility
- High tack adhesive layer for maximum catch

## Optiroll Red

### What is it?

Optiroll Red is used for effective mass monitoring of SWD. Made from high density polyethylene, it offers robust protection from invasive pests.

### Target Pests



### Key Advantages

- Safe to use, robust and tear resistant
- Can be used in polytunnels, outside or glasshouse

### What to Expect

- Can be used with bumblebee or honeybee pollination and natural enemies
- All-season monitoring of fruit crops from pests



### Optiroll

RED

PCT-OPTIBU8-R10 (10cm x 100m)  
PCT-OPTIBU8-R15 (15cm x 100m)  
PCT-OPTIBU8-R30 (30cm x 100m)



# Impact

Dry glue boards

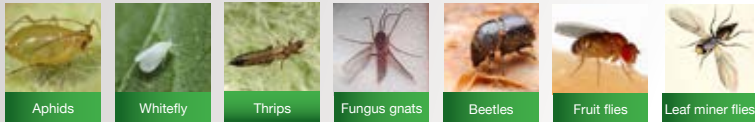


## What is it?

Impact Boards are made from durable plastic with a long-lasting, hold fast glue on each side and peel-off silicon paper. The Impact (dry glue) range of coloured sticky boards.

## Target pests

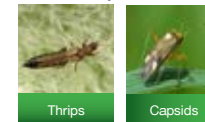
Yellow Impact Boards:



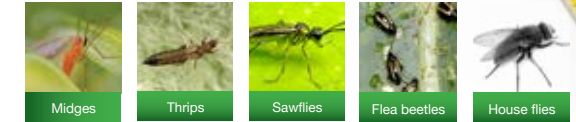
Red Impact Boards:



Blue Impact Boards:



White Impact Boards:



## Key advantages

- High tack adhesive layer
- The adhesive is UV-light stable
- The traps can be used in high temperature and in high humidity
- Works throughout different seasons
- They are available in 3 different sizes: 10 x 25 cm, 20 x 25 cm, 40 x 25 cm
- Available with and without grid pattern for ease of counting

## Impact Board range size selection:

Impact Board Yellow		Impact Board Blue	
PCT-YGB-1024-10 (10cm x 25cm)		PCT-BGB-1024-10 (10cm x 25cm)	
PCT-YGB-2024-10 (20cm x 25cm)		PCT-BGB-2024-10 (20cm x 25cm)	
PCT-YGB-4024-10 (40cm x 25cm)		PCT-BGB-4024-10 (40cm x 25cm)	
Impact Board Red		Impact Board White	
PCT-RGB-1024-10 (10cm x 25cm)		PCT-WGB-1024-10 (10cm x 25cm)	
PCT-RGB-2024-10 (20cm x 25cm)		PCT-WGB-2024-10 (20cm x 25cm)	
PCT-RGB-4024-10 (40cm x 25cm)		PCT-WGB-4024-10 (40cm x 25cm)	

## What to expect

- Effective monitoring of a wide range of flying insect pests
- Maximizes pest catch rate
- Easy to install



# Hytak

Wet glue boards

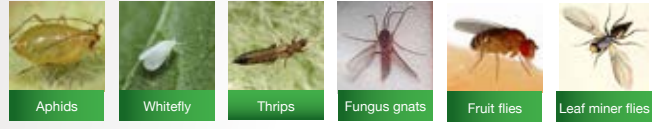


## What is it?

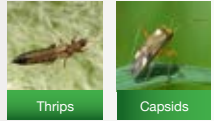
Hytak wet glue boards are made from durable plastic with a long-lasting, hold fast glue on each side.

## Target pests

Yellow Hytak Boards:



Blue Hytak Boards:



## What to expect

- High catch rate of key pests
- Effective for monitoring a wide range of small flying insect pests
- Reduced catch of natural enemies and pollinators
- Long lasting traps that remain effective in different temperatures

## Key advantages

- Best performing whitefly trap in field tests, comparing with 3 market leaders
- They are available in 3 different sizes: 10 x 25 cm, 20 x 25 cm, 40 x 25 cm
- Hytak Boards have an integrated hook for ease of hanging
- Top performance against key pest species
- Glue selected to reduce the catch of important natural enemies and pollinators
- Non-drying glue for longer life

Hytak Board Yellow	
PCT-HTY-1024-10 (10cm x 25cm)	
PCT-HTY-2024-10 (20cm x 25cm)	
PCT-HTY-4024-10 (40cm x 25cm)	
Hytak Board Blue	
PCT-HTB-1024-10 (10cm x 25cm)	
PCT-HTB-2024-10 (20cm x 25cm)	
PCT-HTB-4024-10 (40cm x 25cm)	



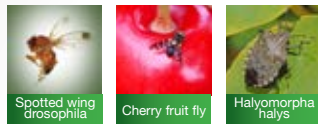


# ProBandz®

## What is it?

ProBandz is an effective food bait adjuvant which is mixed with insecticides to enhance the control of fruit flies such as SWD. It increases the uptake of insecticide which leads to a faster kill of the target pest with a much reduced insecticide rate. It can be used with all authorised plant protection products and is applied to plants as a band treatment.

## Target pests



## Key advantages

- 96% reduction in insecticide usage
- Reduced spray volume and application time, saving labour and fuel costs
- Combats a variety of fruit flies
- Can be combined with all approved insecticides for the target pests, on edible and non-edible crops

## What to expect

- Equal or better SWD control compared to full rate sprays
- 50% reduction in active ingredient costs (estimate)
- Reduced pesticide residues in fruit





# Pheromone Lures



Pheromone-based technology allows species-specific control of pests with reduced effects on beneficials. **Russell IPM** is proud to offer more than 150 pheromones and lures for the management of agricultural and commercial pests including soft fruits pests.

## Diptera

– flies

**Spotted wing drosophila**  
(*Drosophila suzukii*)

**Blackberry leaf midge**  
(*Dasineura plicatrix*)

**Blueberry gall midge**  
(*Dasineura oxycoccana*)

**Raspberry cane midge**  
(*Resseliella theobaldi*)

## Lepidoptera

– moths and butterflies

**European pepper moth**  
(*Duponchelia fovealis*)

**Light brown apple moth**  
(*Epiphyas postvittana*)

**Summer fruit tortrix**  
(*Adoxophyes orana*)

**Raspberry moth**  
(*Pyrausta signatalis*)

**Double dart moth**  
(*Graphiphora augur*)

**Winter moth**  
(*Operophtera brumata*)

## Coleoptera

– beetles

**Strawberry blossom weevil**  
(*Anthonomus rubi*)

**Raspberry beetle**  
(*Byturus tomentosus*)

## Thysanoptera – thrips

**Western flower thrips**  
(*Frankliniella occidentalis*)

## Hemiptera – true bugs

**Tarnished plant bug**  
(*Lygus rugulipennis*)

**Common green capsid**  
(*Lygocoris pabulinus*)



Russell IPM may be able to source pheromones on request that are not already on this list. Please contact us to request pheromones and lures and for more details:  
Email: [info@russellipm.com](mailto:info@russellipm.com); Tel: +44 (0) 1244 281 333

# Delta Trap

## What is it?

The Delta Trap is an ideal trapping device for monitoring pests, for both indoor and outdoor growing areas. The trap is made of a durable, corrugated plastic that is UV and rain resistant, enabling its use across several seasons. The trap requires the addition of a pheromone lure, which will attract and trap the pests.

## Target pests



Lepidoptera



Diptera

## Key advantages

- Long-lasting and quick to assemble
- Can be used over several seasons due to strong, robust material

## What to expect

- Precise and simple monitoring tools
- Cost-effectiveness



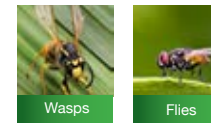
# Wasp & FlyCatcher

with the **Wasp & Fly Lure**

## What is it?

The Wasp & FlyCatcher Trap, also known as a McPhail trap, is used for trapping and precision monitoring both wasps and a range fly species including fruit flies (Drosophila and Tephritid). Pair the Wasp & FlyCatcher with the Wasp & Fly Lure, a highly attractive liquid lure, for effective trapping against wasps.

## Target pests



## Key advantages

- Can be used with a variety of species-specific lures to target pests
- The Wasp & FlyCatcher Trap is yellow in colour to increase attractiveness to wasps
- High capacity to hold many wasps and flies

## Key advantages Wasp & Fly Lure

- The Wasp & Fly Lure is a non-toxic, insecticide free, natural food source
- Effective mass monitoring when paired with the Wasp & FlyCatcher Trap

## What to expect

- Both flies and wasps can gain easy access through a funnel underneath the trap
- Once the insects have been lured into the funnel, they are trapped in the liquid inside
- Robust and weatherproof, designed for long service





# Suzukii Trap



## What is it?

The Suzukii Trap is red in colour which is highly attractive to SWD. The trap can be used with the SWD Dry Lure. Also, the trap may be used with MaxDro (liquid solution) for enhanced trapping, when paired with the SWD Dry Lure (p. 12).

## Target pests



## Key advantages

- Bright red in colour to maximise the traps attractiveness to SWD
- Can be reused
- Effective throughout all seasons

## What to expect

- Accurate mass monitoring
- Reduced crop/fruit damage
- Boost SWD catch rate with the SWD Dry Lure and /or MaxDro
- Reduces catch of non-target species



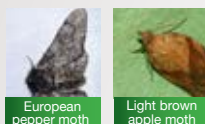


## MothCatcher Trap

### What is it?

This trap is used to monitor Lepidopteran pests. The MothCatcher comprises a weatherproof funnel system and bucket trap.

### Target pests



European pepper moth

Light brown apple moth

### Key advantages

- Durable and hardwearing for both indoor and outdoor trapping
- Can be used for several seasons
- The lid design makes them well suited to outdoor and dusty environments

### What to expect

- Prevention of crop/fruit damage
- Accurate monitoring of pest populations
- Effective mass monitoring of pests with pheromones and species-specific lures



## Mini MothCatcher Trap

### What is it?

A compact version of the MothCatcher Trap for “versatile placement in orchards, allotments and gardens.

### Target pests



European pepper moth

Light brown apple moth

### Key advantages

- Mini MothCatcher is ideal for use in orchards, allotments and gardens
- The green colour of this trap reduces attraction to non-target insects

### What to expect

- Accurate monitoring of pest populations
- Effective mass monitoring of pests with pheromones and species-specific lures





## Green Vane Trap

### What is it?

The Green Vane Trap has been developed to be highly effective in monitoring and trapping *Anthonomus rubi* and *Lygus rugulipennis*. The pests are highly attracted to the pheromone lures and the green colour of the trap vanes.

### Target pests



### Key advantages

- Both the *Anthonomus rubi* and the *Lygus rugulipennis* pheromone lures can be used at the same time with the Green Vane Trap
- The pests are highly attracted to the lures and the colour of the trap vanes

### What to expect

- Accurate mass monitoring of pest populations
- Effective trapping of both *Anthonomus rubi* and *Lygus rugulipennis* when combined with the species-specific lures
- Reduction in fruit damage



## Raspberry Beetle Trap

### What is it?

The Raspberry Beetle Trap (White Vane Trap) combines visual and olfactory cues to monitor and attract raspberry beetles. The beetles are attracted to the lures and to the white colour of the cross vanes which resemble raspberry flowers.

### Target pests



### Key advantages

- Once in the trap, beetles are easy to detect, count and identify
- Reduces catch of non-target species

### What to expect

- Accurate monitoring of raspberry beetles
- Reduction of raspberry beetle population
- Higher productivity of the crop





# REcharge

## What is it?

Recharge is a biofertiliser based on beneficial soil microbes. It creates a symbiotic layer of good microorganisms around the roots, enhances the plant's water and nutrient uptake, and forms a barrier against pathogenic fungi. Recharge helps in the stimulation of natural plant immunity and strengthens them against a variety of diseases and pests.

## Key advantages

- Enhances plant's defence against pests, diseases, and other biotic/abiotic stresses
- Promotes soil and plant health
- Excellent shelf life (2 years)
- Used for both food/non-food crops

## What to expect

- Healthier soil
- Stronger plants and higher yields
- Significant reduction in pest and disease incidence
- Higher crop quality
- Increase in Class I fruit
- Increases fruit size
- Higher yields



## What is it?

Yokosan is an organic, bio-stimulant liquid, based on an optimised blend of humic acid, amino acids, and seaweed extract. It does not contain any synthetic additives or genetically modified organisms. It is an ECOCERT organic-certified product and can be used in fertigation systems as well as soil.

## Key advantages

- Develops a powerful root system
- Improves yields
- Strengthens plants against biotic and abiotic stress
- Long shelf life (3 years from the date of manufacturing)
- Enhances the availability of micronutrients to plants
- Improves water holding capacity
- Increases seed germination

## What to expect

- Increased number of flowers and fruit set
- Better crop quality
- Earlier harvest
- Increased disease resistance
- Greater returns with increased percentage of Class I fruit





## What is it?

Converta Bio NPK is a specialised liquid biofertiliser with beneficial microorganisms. It fixes atmospheric nitrogen, mobilises soil's potassium, and solubilises phosphorous. It is highly effective for plants against biotic and abiotic stress and helps reduce the reliance on synthetic/chemical fertilisers. It contains mycorrhizal fungi which help to extend the rooting system, enabling greater nutrient and water uptake. This results in improved plant efficiency and stronger natural defence in the plant. Mycorrhiza also helps to support soil microbes and overall soil health.

## Key advantages

- Fixes atmospheric nitrogen
- Makes phosphorus and potassium available to the plant
- Reduced fertiliser use
- Enhances soil and plant vigour
- Improves yield
- Eco-friendly
- Reduces the leaching of nitrates and phosphates into water bodies
- Adds beneficial soil microbes to the soil

## What to expect

- Stronger root system
- Reduction in carbon footprint
- Up to 50% reduction in chemical fertiliser use
- Improved crop quality
- Higher yield with lower cost



## FIZImite<sup>®</sup>

### What is it?

FIZImite contains a unique blend of safe, physically acting pest and disease control surfactants.

### Target pests



### Key advantages

- Can be used on all edible and ornamental crops
- Physical mode of action
- No phytotoxicity
- Contains foliar nutrients for plant's health
- No harvest interval and no residual action
- Can be used right up to harvest

### What to expect

- Healthier plants and higher yields
- A clean, shiny appearance to the plant
- Higher crop quality with significant reduced pesticide residue





**Contact us:**

Russell IPM Ltd, Unit 45,  
First Avenue, Deeside Industrial Park,  
Deeside, Flintshire, CH5 2NU, UK  
Phone: +44 (0) 1244 281 333  
Email: [info@russellipm.com](mailto:info@russellipm.com)  
Fax: +44 (0) 1244 281 878  
[www.russellipm.com](http://www.russellipm.com)



**Russell IPM Group  
Distributors UK:**

- Brinkman
- Agrovista
- Agralan
- Fargro
- Bioline
- Agrosiences
- Agrii
- Dejex Supplies Ltd.